

MANUAL

Crystal Tech & Multitalent



Goldeneye
THE MICROPIGMENTATION COMPANY



Index of contents

Important information	11	Hygiene	15
Storage and operating conditions		Applicators	
Disposal			
Signs and symbols on the nameplate		Handling and application	16
Utilisation Micromix and Detector	12	Useful advice	17
Placing into operation Crystal Tech Pro		Malfunction and troubleshooting	
		Repair and service	
Placing into operation Multitalent	13	Customer service	
		Guarantee	
Goldeneye Dermograph	14		
Hygiene		Room for notes	26-27

Technology

Congratulation for your new High Tech-Liner! With the Goldeneye Micropigmentation-Unit you have decided for one of the most modern devices which distinguishes by especially soft working as well as by a very quick colour implantation.

With this unit you can carry out all usual working techniques in a simple, quick and secure way.

The new control modul with medically minimalistic design.

The Goldeneye Micropigmentation-Unit is equipped by a SMD Chip. This is an high-performance micro-chip, manufactured automatically. It is very small and needles only little space. This fact made the striking small design possible.

Parts included Crystal Tech

Crystal Tech Unit	Art.Nr. 201271
Power Supply	Input: 90-240 V, 50 Hz Output: 12 VDC, max. 1500 mA
Dermograph	Art.Nr. 201201 6 Volt
Foot switch	Art.Nr. 201181
3x Acrylic storage place	Art.Nr. 201630
Micromix "Mini" wireless	Art.Nr. 201510
Detector "Mini" wireless	Art.Nr. 201810

Parts included Multitalent touch

Multitalent Unit	Art.Nr. 201241
Power Supply	Input: 90-240 V, 50 Hz Output: 12 VDC, max. 1500 mA
Dermograph	Art.Nr. 201201 6 Volt
Foot switch	Art.Nr. 201181
3x Acrylic storage place	Art.Nr. 201630
Micromix "Mini" wireless	Art.Nr. 201510
Detector "Mini" wireless	Art.Nr. 201810



IMPORTANT TIPS! – It is essential to read and always follow these indications!

- A power supply provides the equipment with the necessary voltage. Only one of the following GEPower supplies shall be used: GE-01150, GE-01155 and GE-01250
- Any unintended use of the equipment or if it is put to any use other than as described in the directions for use, the guarantee and manufacturer's warranty shall not be valid.
- Never immerse the equipment in liquid or let liquid fall onto it! In this event, immediately disconnect the equipment from the power supply and immediately remove the plug from the power supply!
- The equipment should never be used in wet rooms or come into contact with liquid.
Do not put the hand-piece away when switched on. Put it always in the intended storage place. Please use only non-alcoholic disinfectant for all acrylic parts.
- The equipment should never come into contact with medicines or be used in conjunction with them.
- Only the following GE-hand-piece can be connected to the device: GE-01201 GE-Dermograph
- Please note: The hand-pieces can slip and fall e.g. on your foot. It should always be held firmly in your hand!
- If the Pigment Applicators are set on the hand-piece, there is the risk of injury due to the needle tips.
Please be very careful when using the device. The professional rules are to be applied.



For indoor
usage only.



Do not use in
damp locations.

Operating temperature 15 - 40 °C!



Before putting the equipment into operation it is essential to read the directions for use!

Attention: The equipment may only be opened by the manufacturer or by an authorized GEDistributor supplier! Otherwise the guarantee or manufacturer's warranty will not be valid!

The equipment should only be used by people who have been trained and instructed.

Disposal

Please do not dispose off the packaging, but store it for transport purposes. The equipment will be disposed of by the manufacturer or an authorised company. Before disposal it should be carefully disinfected. Before disposal, please call your authorised Goldeneye Distributor.



ATTENTION:

The plug for the connection cable should only be used with the Goldeneye equipment. Never connect the hand-pieces to another power supply unit! Warranty void if this is not considered.

Signs and symbols on the type plate



CE identification according to the
guidelines 2004/108/EC
and 2006/95/EC



Manufacturer



Protection category II



Placing into operation Crystal Tech

Connect the provided power supply (12 VDC, 1500mA), the handpiece and the foot switch to the plugs on the back side of the unit. Also connect the power supply to the socket.

Cover the whole dermograph (handpiece and cable) with goldeneye protective foil. Place handpiece onto acrylic storage place. The unit is now ready for operation.

Pushing the SOFT (2) / MED (3) / INTENS (4) button you can adjust the corresponding stroke movement. Pushing again the button you can raise the frequency of the penetration (more information below).

Short pressing the ON/OFF (1) button the unit goes into standby mode by keeping the adjustments. Press it again to quit the standby mode.

For a complete shutdown press the ON/OFF (1) button for about 3 seconds.

Key combinations:

Push the button once: LED glows
Moderate stroke movement of the needle for standards.

Push the button again: LED pulses
Faster stroke movement for a stronger colour flow and more intensive insertion.

SOFT Sensitive, fine and very dry skin

MED Standard

INTENS Problem skin (e.g. scared or callous skin) and paramedical treatment

Placing into operation Pigment Detector (wireless)

After inserting the batteries the Detector is ready for us.

Hold the button: On

Release the button: Off

Placing into operation Micromix (wireless)

After inserting the batteries the Mixer is ready for us.

Hold the button: On

Release the button: Off





Necessary preparations before use Multitalent touch

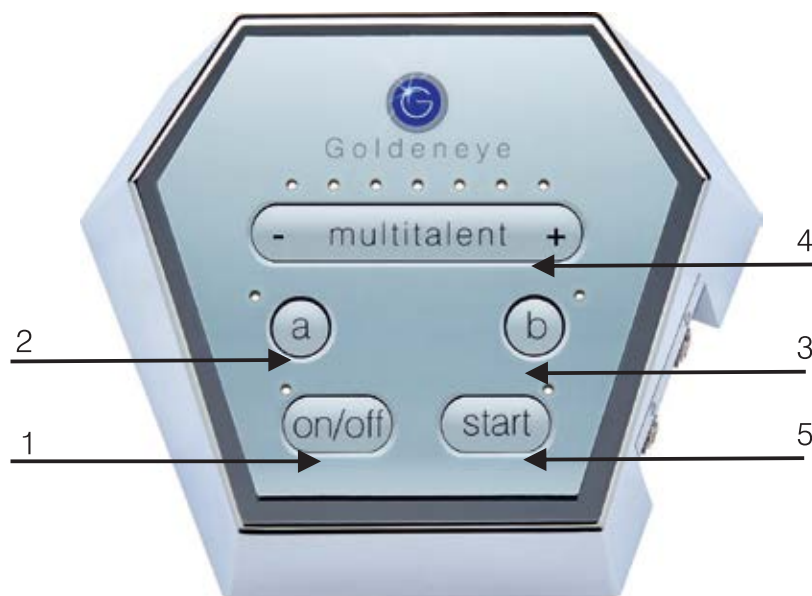
Put the GE-Multitalent on a solid base.

1. Connect the Adapter and the foot-pedal.
3. Connect the Dermograph in output A or B.
„A“ for medium speed levels (80-120 rps)
„B“ for quicker speed levels (130-190 rps)
4. Connect the Pigment Detector in output A or B.
5. Connect the Micromix in the output MIX
6. The dermatographs are put on the acrylic storage or on the depositing rack. Cover the unit with the plastic covering and the handpieces with the film tube.



Placing into operation Multitalent

Check all outputs and inputs (see preparation for initiating operations). Push the ON/OFF button (1), LED (2) is glowing.



If you have connected the Dermograph through plug A, then press the button „A“ (3), LED (6) is glowing, if the button is pressed twice, the LEDs (6) + (7) are glowing, if the button is pressed three times, the LEDs (6) + (7) + (8) are glowing. This corresponds to the three speed Levels A1, A2 and A3.

If the Dermograph is connected through plug B, press the button „B“ (5), then the LED (10) is glowing, if the button is pressed twice, the LEDs (10) + (11) are glowing, if the button is pressed three times, the LEDs (10) + (11) + (12) are glowing. This corresponds to the speeds B1, B2 and B3.

Disconnection, Stand-by Mode

By pressing the ON/OFF button, the device is switched off completely. The pre-settings are not saved. By pressing the Stand-by button, the actual working process is just interrupted and the speed setting is saved (Memo function). By pressing the stand-by button again, the device starts with the same settings than before the stand-by mode. In the stand-by mode it is not possible to switch between the hand-pieces. This is only possible in the active mode.

Handling and application

The authorised Goldeneye distributor offers intensive training courses. Please enquire about the course dates. Goldeneye Permanent System GmbH in general does not accept any liability for the results after an application.



The Goldeneye Dermograph



Perfect hygiene and a technical inside - precise like a swiss watch mechanism



The hand-piece is driven by Swiss quality motor which is free from maintenance. Transfer of power is done by precision-engineered gears. This is a Goldeneye exclusive technique.



Meet the demands at 100% with Goldeneye: The Goldeneye Dermograph is protected on this place by the PATENTED Hygiene Modul with Reflux Protection System.

According to international hygiene regulations there cannot be a flow of pigment or body liquids into the fixed parts of the hand piece / motor.

Only by assuring that no contamination can remain in or on the device can it be called hygienic.

Pigment or other liquids do not get in touch with the machine's inside. At the goldeneye applicators the needle is separated from the gears. This additional protection avoids at 100% the danger of germ transfer where the needles is fixed.



The high-quality plug connection is guaranteed by the so-called code system. This avoids loose connections, defective connections and other connection problems. The code system is used especially in medical technology and thus offers a perfect condition for the Multitalent.

A robust, kink-free cable offers additional comfort.

Utilisation Micromix

(Attachment Crystal Tech Pro / Multitalent)

Charge the micromix with a sterile scribing stick. Pressing the button the stick starts to rotate. After mixing the colour you can use the remaining pigment for subscribing.

Tip: You can wipe off the excess colour at the sterile pigment pot.



Utilisation Detector

(Attachment Crystal Tech Pro / Multitalent)

Examining the shading by illuminating the pigmented skin area you can easily control the density and constancy.





Hygiene

Generally, the nationally and regionally valid regulations for the use of Permanent Make-up or Micropigmentation technologies are to be respected. If required, contact your authorities. Goldeneye offers special hygiene trainings. The following aspects should be respected always.

Before and after each treatment, all hand-pieces and machine surfaces are to be disinfected. Additionally all hand-pieces are to be packed in the adequate hygiene protection covers. Put the hand-piece through the open side of the protection cover and pull the cover over hand-piece and cable.



Furthermore, the hand-piece holder should be covered by the adequate hygiene protection cover.

In order to not interrupt the „Hygiene Chain“, the sterile colour is portioned with a sterile pipette in a sterile pot and mixed with a sterile Mixer. Then it is put on the skin with a sterile brush and finally implanted by a sterile needle.

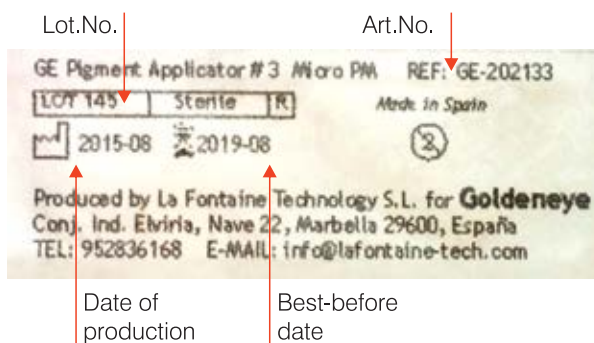


Hygiene product – exemplary declared

Attention:

Please do not use the Pigment Applicators if the best before date has expired or the packaging is defective.

The Applicator is to be used only once for a customer. Never use it for different persons or different zones. This hygiene product must be disposed off in special containers and be picked up by a special service.





Applying the applicators on the dermograph

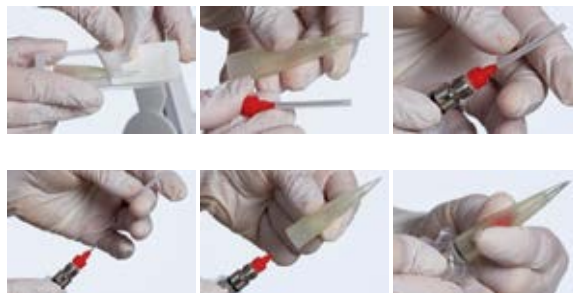
Open the sterile applicator packaging. Fix the applicator by turning it on the top of the dermograph until you notice a little resistance.

NOTE: The applicator should not be screwed on too tightly, three semi-turnings are enough.

Remove the needle protection tube. Tip: the colour flow can be improved for Applicator 1 and 3, if the needle is standing minimally sloping.

Put the machine top (nozzle) on the dermograph and screw it over the black rubber ring. By screwing on and off the machine's tip, the visible and active part of the applicator is shortened or lengthened.

Please make sure that the Dermograph is switched on while you are setting the length of the applicator. For pigmentations in the face, a penetration depth of less than 0,5 mm is recommended.



Handling of the dermograph

The Goldeneye Multitalent differs in its construction style from all other tattoo and semi permanent make-up devices. The rotation movement of the motor is transferred by gears and a cam shaft into a stroke movement. This avoids that the needle has any play in its forward motion and penetrates the skin softly. The feeling of pain is minimal.

Thanks to the perfect colour transport, pigmentation is mostly finished after the first working and does not have to be repeated several times during the treatment. Should the result be not covering after the first contact with the skin, please check the hand-piece driving and the filling of the colour container.

- The dermograph should always be held straightly or slightly slanting in direction of guideline.
- Never hold the Dermograph in a very sloping position against the pre-drawing because in this case the line is not met precisely.
- The slower the Dermograph is guided during the pigmentation, the more pigments are implanted into the skin and the more intensive the result is.
- If the Dermograph is guided quicker, results are more shaded.

Pigment suction

Do only use sterile pigment colour in monodose. Bottles do not guarantee any sterility. For dosing, we recommend sterile pipettes. Fill the required quantity of pigment in the sterile pot. As soon as the dermograph gets in touch with the pigment, the machine tip absorbs automatically the pigment colour.

When penetrating into the skin, the dermograph gives exactly the right quantity of colour in order to guarantee even results. The colour flow depends on the effective needle setting.





Useful advices

Start with lighter pigments because it is easier to make the pigmentation more intensive later.

Start with smaller drawings because it is easier to enlarge the drawing later.

Beginners should respect the following: better smaller, shorter, lighter and more superficial than too large, too long, too dark and too deep.

Use the dermatograph on pre-drawn lines – never implant the colour without guidelines into the skin. This avoids faulty drawings.

Use the Goldeneye Micromix for pre-drawings and for mixing the colour. It is easy to handle and offers mixing without colour splattering. Compared to usual pre-drawing pencils which often may cause allergies or intolerances due to unknown ingredients, the sterile, disposable mixing sticks have the advantage that pre-drawing is done with the original pigment. These mixing sticks support hygienical working and are a favourably-priced alternative to usual pre-drawing brushes.

Malfunction and Troubleshooting

ON/OFF button, no LED light

Test the power plug supply. Is the plug correctly placed in the connector? Is the power supply plugged in the right way? Is the power supply of the room working?

Hand-piece does not start up.

Check the connecting cable. The connector is loose on the frame connector.

Liquid pours over or into the casing.

Immediately disconnect the power plug and dry the equipment.

The button on the foil keyboard do not react

Disconnect the power plug from the mains supply and reconnect after 15 seconds. If the error persists, please contact your Goldeneye distributor.

The display does not react

Disconnect the power plug, wait about 1 minute and reconnect the equipment to the mains supply.
If this error persists, please contact your Goldeneye distributor.

Please note:

As a consequence of heavy use, over a period of time, the noise emission of the hand-piece might increase. But this does not affect the functioning of the equipment.

Repair and servicing

The equipment does not require any servicing if it is used correctly and as intended. Should, however, any problems arise, please contact the customer service department.

Customer service

Please apply to your authorised Goldeneye distributor or directly to Goldeneye Permanent-System GmbH Germany, Mittelweg-ring 31, D-76751 Jockgrim.

Our opening hours are as follows:

Monday-Friday: 9:00 – 17:00 Uhr

Tel: +49 / (0) 721 627 66-10

Fax: +49 / (0) 721 627 66-11

E-Mail: info@goldeneye.de

Warranty

Our machines are purchased with a 2-year warranty beginning with the purchase date. Assumption is that the equipment is handled according to the general norm and that the conditions mentioned in the product information.

Warranty is excluded for the following:

- Misuse / negligence
- Damages by pressure on panel
- Mechanical damaging
- Settings/repairs and/or modifications which were not realized by an authorized Service
- Display's wear
- Damages as a result of violence, humidity, dust, electric shocks or any other improper handling
- Unsuitable environment / improper installation and service
- Transport damages, also including transports to the Service Centre, due to improper or inadequate packaging



Seit 2009 Preisträger in Folge • Beauty Forum Kategorie Permanent Make-up

Exclusive distribution: Goldeneye Micropigmentation UK Ltd.
7 Millfield Lodge - Cottingley Business Park - Bingley - BD16 1PY - UK

TEL: 01274 911890 - EMAIL: info@goldeneyecompany.co.uk - WEB: www.goldeneyecompany.co.uk

© Copyright 2016 by Goldeneye GmbH, Changes and misprints reserved • images Shutterstock • standing March 2016